



VIRTUAL ARENA

**The innovative entertainment solution for better utilisation and monetisation of your squash, padel and tennis-courts.**



# Making better use of empty spaces

Melior Sports transforms squash, padel, badminton and tennis-courts into a world full of fun and unforgettable moments. Without conversion, the courts can be used for virtual reality games within seconds to better utilise and monetise the space. Competitive virtual reality games immerse young and old in other worlds. Our next-generation VR technology enables social and family-friendly games, e-sports tournaments or team events. VIRTUAL ARENA is a mobile turnkey solution that includes everything needed to operate a profitable virtual reality attraction.

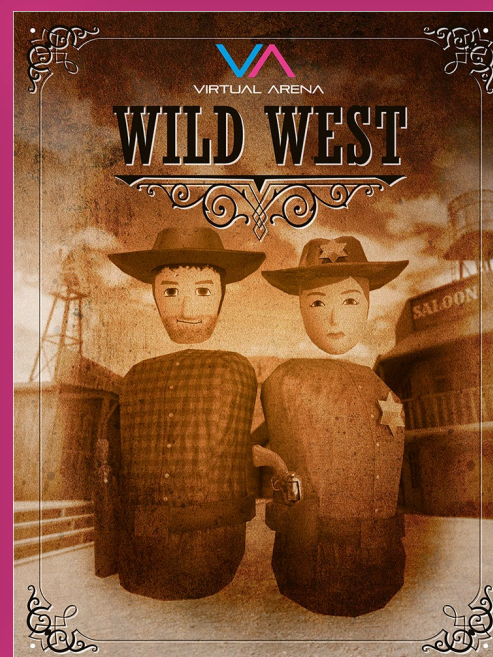
[Watch Video](#)

# The new e-sport with real movement

VIRTUAL ARENA is the new sports and games activity for families, perfect as a bad weather option. Our technology and games allow very fast movements with real calorie consumption. The activities are comparable to paintball or laser tag, but without the risk of injury. Motion sickness does not exist with us because the virtual movement perfectly matches the actual movement of the body. The VIRTUAL ARENA enables social gameplay because we do not use noise-cancelling headphones. So players can talk to each other and hear the sounds of the games through built-in speakers.



# The games



The VIRTUAL ARENA comes with more than 8 games developed by Virtual Discovery AG in Switzerland. All content is handmade and gives the games a unique style. They have been optimised for smooth operation on the VR hardware.

The gameplay is fast, exciting and very varied. By simplifying the game rules and limiting the interactions to a single button per controller, we ensure fast and intuitive onboarding.

As we use very moderate forms of violence, the games can be played by children aged 7 and up. New games and maps are part of the Melior Sports service contract, which is included in the offer for the entire contract period.

# Snow Battle

Snow Battle is a virtual snowball fight for the whole family. In front of a magical backdrop, 2 teams compete against each other and experience winter fun of a very special kind.

Genre: PvP shooter

Player: 2-8

Map sizes: 6x6m, 9x6m,  
8x8m, 10x10m, 12x12m

Minimum age: 7



**Gameplay video**

[youtu.be/Yr1RU68jr6o](https://youtu.be/Yr1RU68jr6o)



# Mini Block Towers

Your guests are shrunk to toy size in this innovative and family-friendly shooter. Each player must defend their own tower.

Genre: Tower defense / breakout-like

Player: 2-16

Map sizes: 3x6m, 6x6m, 9x6m, 8x8m, 10x10m, 12x12m

Minimum age: 7

**Gameplay video**  
[youtu.be/tn7nQ14PN9Q](https://youtu.be/tn7nQ14PN9Q)



# Laser Tag

In Laser Tag, your visitors will experience action-packed battles with laser weapons in a simulated house fight of the future. Unforgettable fun in a science fiction scenario.

Genre: PvP shooter

Player: 2-8

Map sizes: 6x6m, 9x6m, 8x8m, 10x10m, 12x12m

Minimum age: 7



**Gameplay video**  
[youtu.be/4altWe1sp9s](https://youtu.be/4altWe1sp9s)



# Zero Gravity Tennis

This game offers virtual sport with real calorie consumption. Two players compete against each other and try to move a weightless ball into the opponent's field with energy paddles. This is where you really work up a sweat.

Genre: Sports

Player: 2

Map sizes: 3x6m

Minimum age: 7

**Gameplay video**

[youtube.com/shorts/1nhNkfYUcGk](https://www.youtube.com/shorts/1nhNkfYUcGk)





# Wild West

Young and old alike will quickly work up a sweat in this action-packed, competitive shooter. Alternating indoor and outdoor settings provide plenty of variety.

Genre: PvP shooter

Player: 2-8

Map sizes: 6x6m, 9x6m, 8x8m, 10x10m, 12x12m

Minimum age: 7

**Gameplay video**

[youtube.com/shorts/eIS69YuVX0I](https://youtube.com/shorts/eIS69YuVX0I)



# Paintball

Incredible Paintball action on large virtual outdoor spaces with tons of creative and colorful obstacles for the young and old. The setting was inspired by a South Korean TV series.

Genre: PvP shooter

Player: 2-8

Map sizes: 6x6m, 9x6m, 8x8m, 10x10m, 12x12m

Minimum age: 7



**Gameplay video**  
[youtu.be/dXHQ8pQRgbY](https://youtu.be/dXHQ8pQRgbY)



# Joller House

Joller House is based on a true incident that took place in central Switzerland in the 19th century. Players experience a horror walkthrough escape game with creepy jumpscare effects and many puzzles.

Genre: Escape game

Player: 1-4

Map sizes: 9x6m

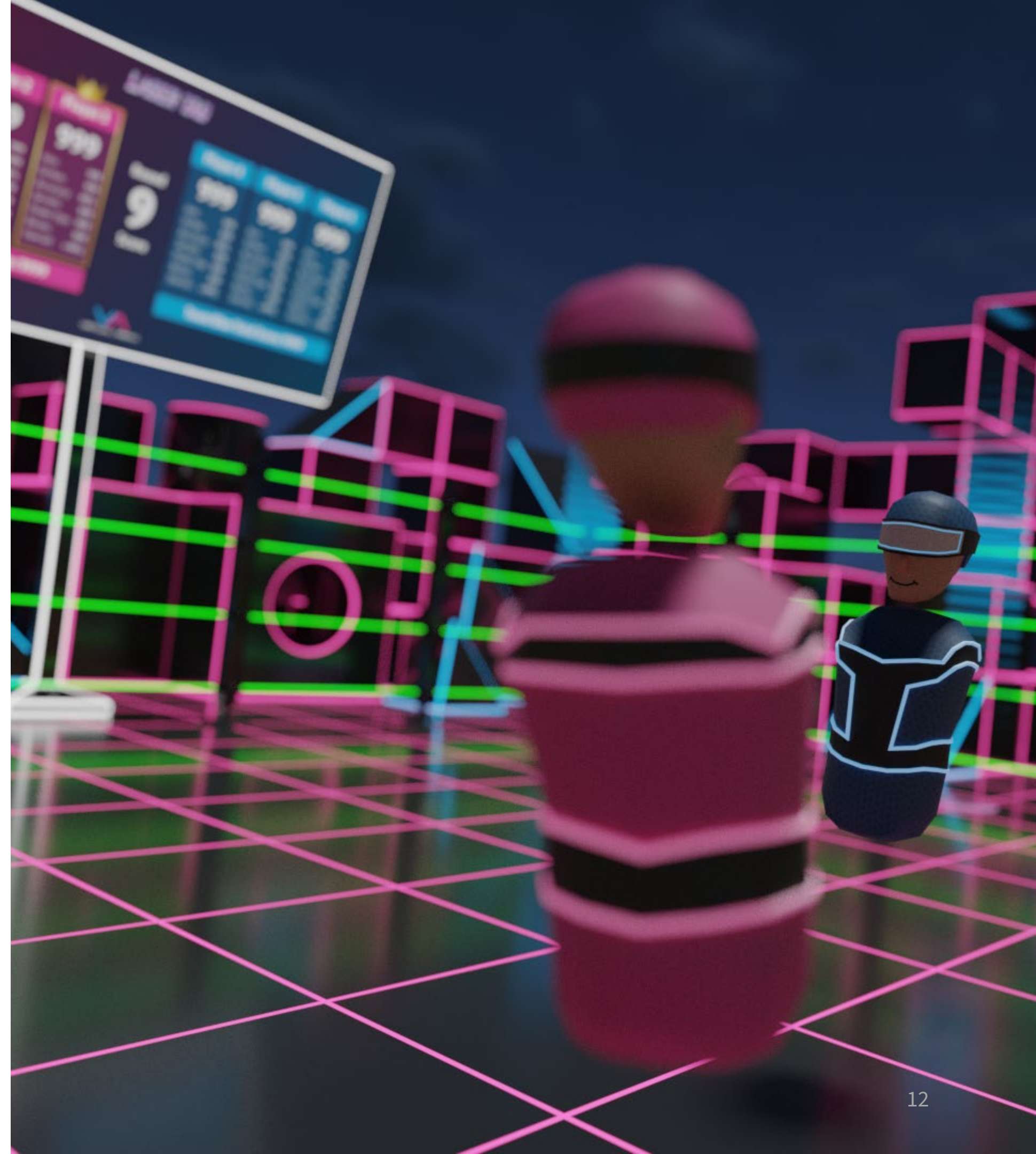
Minimum age: 16



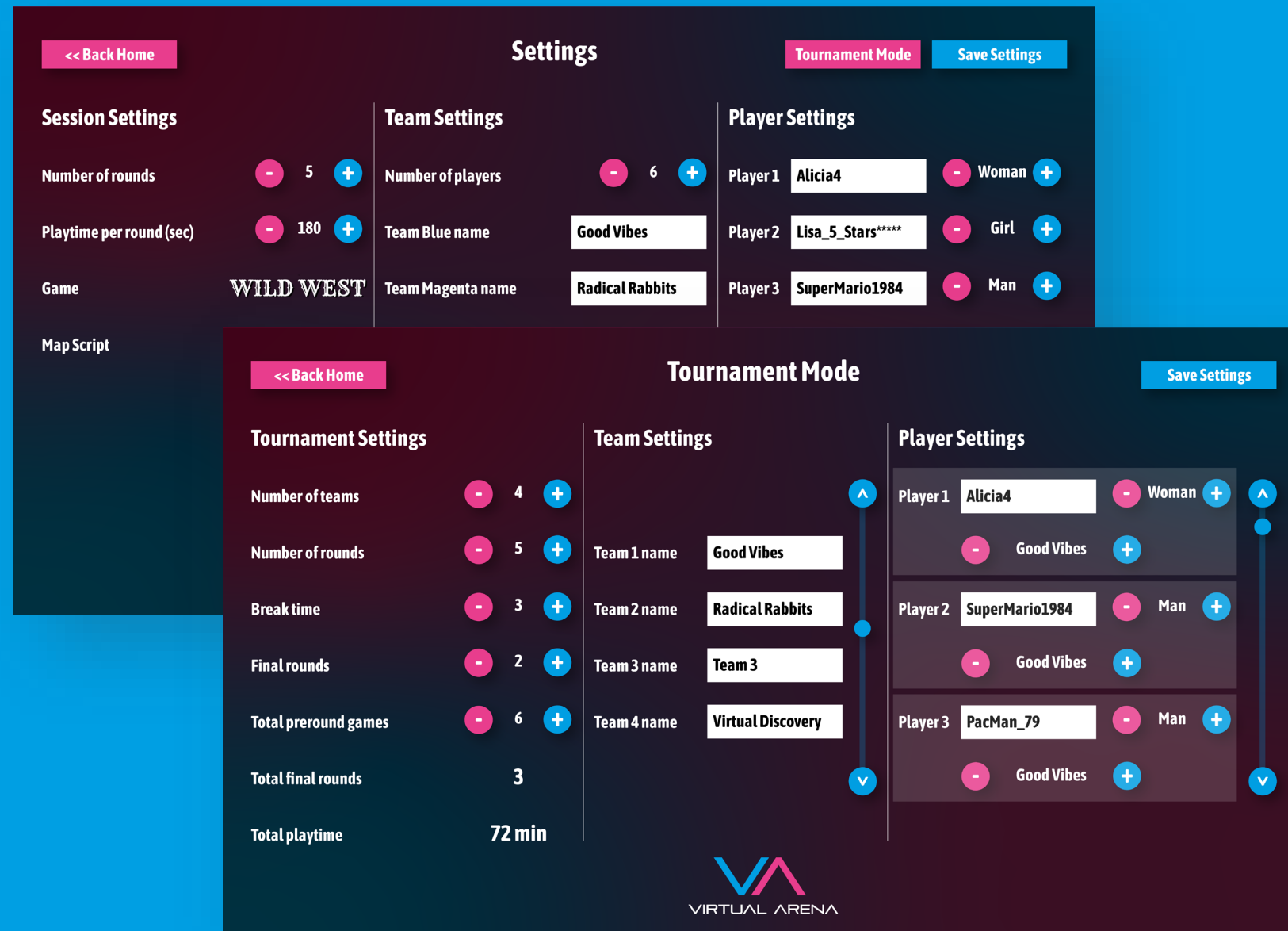
# The virtual lobby

The virtual experience begins in the lobby after your guests put on the VR headset. Players are immediately immersed in the VIRTUAL ARENA and can familiarize themselves with VR because they can see each other and walk around freely in the virtual world. The lobby is also the place where players can see their points and achievements after each game. It is the meeting place for short breaks between rounds.

You can show advertisements of you or of sponsors who want to be present in a very innovative and eye-catching way on a large virtual display. This way, you can advertise other offers from your location while the players are in virtual reality.



# Individual gaming experience



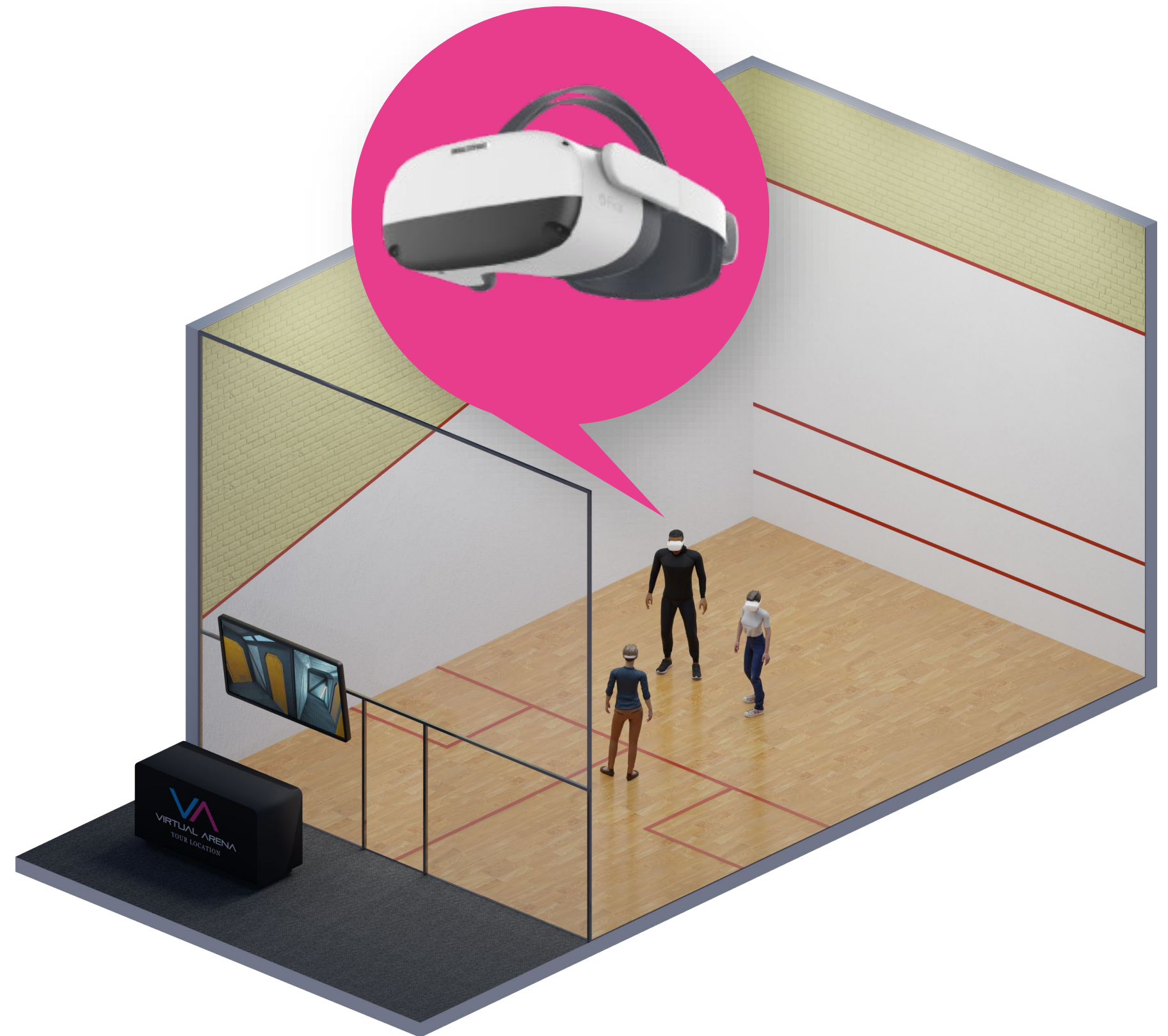
Each session or round is fully configurable. You can select the round times, the number of rounds per session, the names of the players and teams, the games and the maps. A special mode for complex tournaments with hundreds of active players is also integrated.

The system is very flexible and gives you the freedom to run the VIRTUAL ARENA with variable group sizes and tournaments. Team events, birthday parties, e-sports events or regular sessions are created in seconds. You decide whether you want to sell single tickets per session or rent out the attraction for a large event with many guests.

# Technical components

Melior Sports has developed a cost-effective, turnkey solution for location-based entertainment. All components are state-of-the-art and based on the latest virtual reality hardware. The standalone Head Mounted Displays (HMD) are wirelessly connected to the game server running the application that allows you to design the experience for your guests.

The VIRTUAL ARENA requires no cables, no bulky and heavy devices or additional sensors. It is designed for ultra-fast onboarding and immersive gameplay. An optional LTE router allows remote access and guarantees updates and technical support. A large TV next to the arena serves as a screen for spectators and allows customers to experience VR from the outside.



# The hardware starter-kit



## VR devices

Depending on your needs and the size of your playspace, we deliver 4-16 Android-based standalone virtual reality headsets. It is either the Pico Neo 3 or Vive Focus 3.



## PC & spectator screen

You will get a Windows 11 gameserver PC in a small form factor case and a professional 55' display which can be attached to a TV trolley or TV wall mount.



## Wifi 6 router

All VR-devices needs to be connected to the gameserver PC via Wifi 6. We deliver a powerful high speed Wifi 6E router of the latest generation.

Starting at only  
5'000.- £  
for 4 players

# Flexible game license payment models

## Pay-as-you-go

**0.09 £**

per minute and player

Melior Sports Service-Level-Agreement (SLA) included

## Monthly flatrate

**490.- £**

per month

Melior Sports Service-Level-Agreement (SLA) included

## Yearly flatrate

**4'900.- £**

per year

Melior Sports Service-Level-Agreement (SLA) included



# The virtual reality hardware: *Pico Neo 3*



Comfortable,  
light, ergonomic,  
adaptable



3664 x 1920 px  
resolution,  
90Hz refresh rate



With integrated  
hi-fi stereo  
speaker with 3D  
sound



Long battery life  
for up to 3 hours  
playtime



Precise tracking of  
head and  
controllers for  
safe VR gaming



Fast WiFi6 for  
uninterrupted  
sessions



Optional device  
management  
software  
*ManageXR*

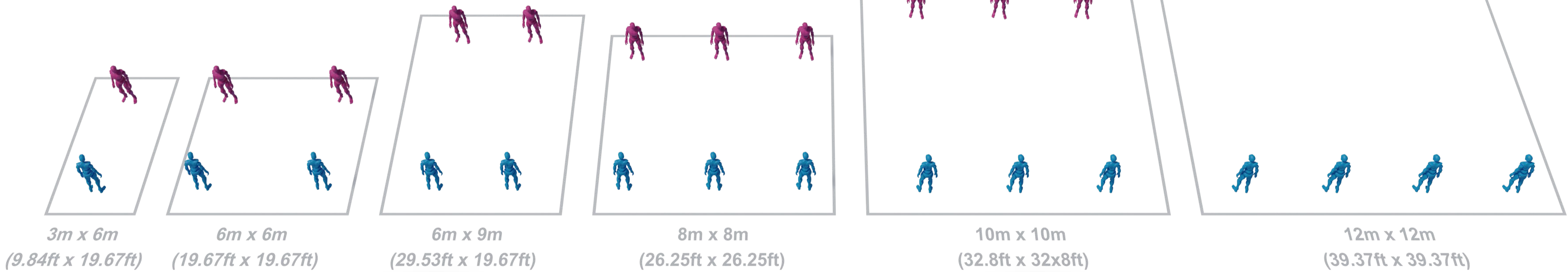


Hygienic  
materials for  
quick and easy  
cleaning

# Different play spaces

Depending on your location, we can supply the VIRTUAL ARENA in different sizes and with different numbers of simultaneous players. The minimum size for 2 players is 3m x 6m (10ft x 20ft). The maximum size for up to 8 players is 12m x 12m (40ft x 40ft).

**12m x 12m – works well on half a tennis-court**



**9m x 6m – a squash court is the perfect size**

**10m x 10m – great for half a padel court**

# Service, support and marketing

To ensure an ideal brand experience, we provide you with professional images, videos, text modules and guidelines. Our technical support is available by phone during our business hours, email and contact form.

We have remote access to your VIRTUAL ARENA and are able to transfer updates in seconds. You receive the complete hardware and software package to run your own VR business. This means that we do everything in the background to guarantee the best possible entertainment experience for your customers.



# Contact



Melior Sports Limited

Unit 18  
Winnington Business Park, Wolstencroft, Northwich  
CW8 4DL

Nicholas Thompson  
Founder, CEO

0330 133 6205  
07896 61 7753  
nick@meliorsports.com

[www.meliorsports.com](http://www.meliorsports.com)

